

NOTICE OF RATE INCREASE

New collection rates for the County of Santa Cruz will become effective July 1, 2022.

For more information on Commercial or Multi-family rates, please contact Customer Service or visit our website [greenwaste.com/santa-cruz-county/](https://www.greenwaste.com/santa-cruz-county/)

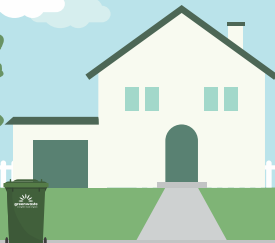
Our franchise agreement with the County of Santa Cruz includes annual rate adjustments based on changes in cost of living indices, and costs of processing materials. GreenWaste Recovery is committed to helping the County of Santa Cruz meet their Zero Waste goals, and comply with state regulations that will create a more sustainable community.

RESIDENTIAL GARBAGE RATES

20-gallon. . . .	\$24.62
32-gallon. . . .	\$33.99
64-gallon. . . .	\$67.89
96-gallon. . . .	\$101.77



www.GreenWaste.com





375 Industrial Rd.
Watsonville, CA 95076

RIGHT SIZE YOUR CONTAINERS!

Customers are now required by law to compost food scraps and yard trimmings in a green container. It's part of our fulfillment of the new state climate law SB1383. By moving organic material out of the garbage into a green container you MAY be able to save money by downsizing your garbage. The smaller the garbage container the less you pay.



See Reverse For Important Information About Your Rates

Visit us online at
www.greenwaste.com